



‘joyMe



'joyMe - with style on board

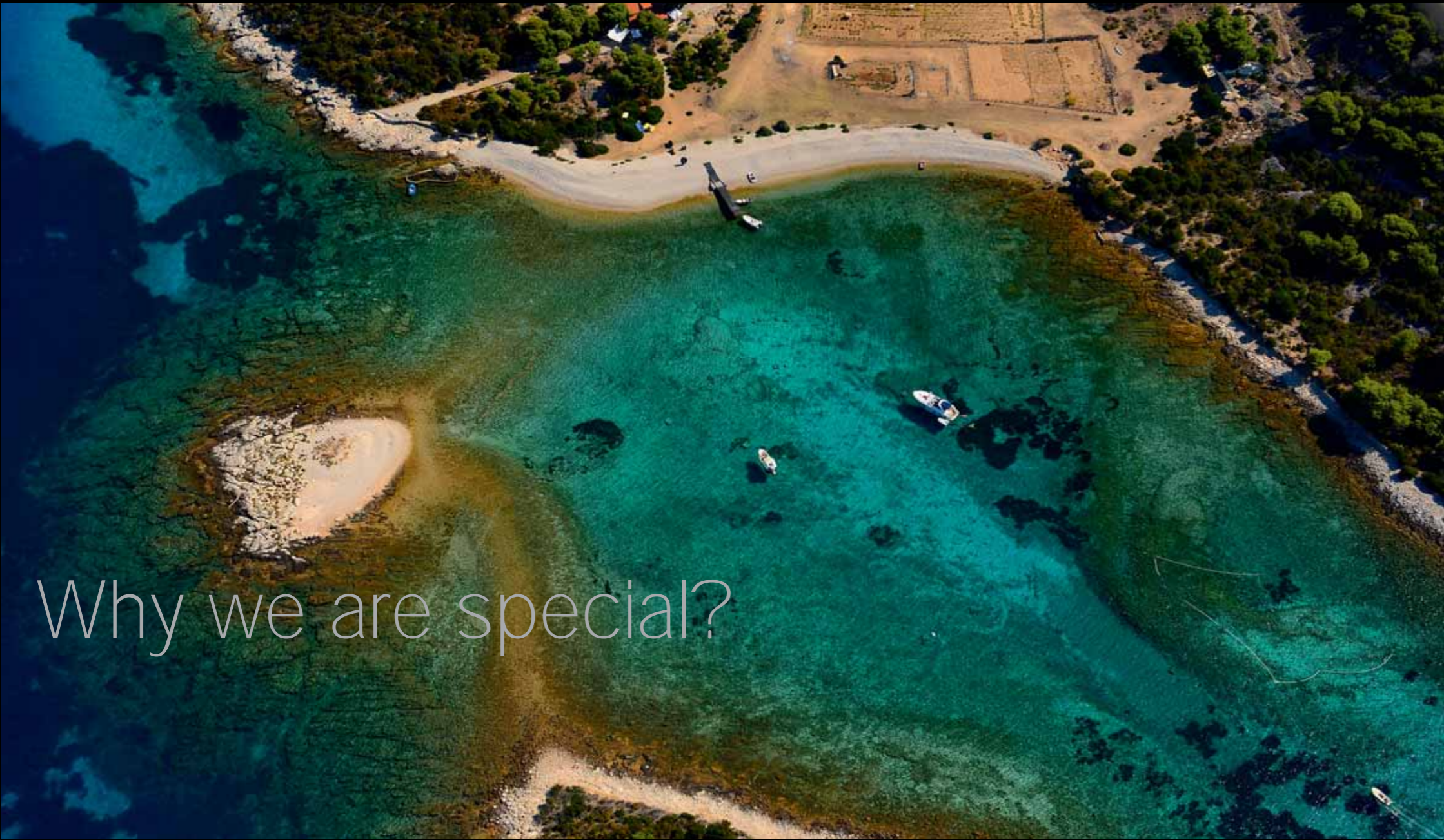
The name of the first yacht built by Philip Zepter Yachts speaks enough for itself. Being created as the ultimate playground for the owner she offers introduction to the lifestyle full of movement in good spirit and joyous atmosphere. The invitation to join 'joyMe starts with her elegant hull lines and unique styling of exterior with special colorful paint scheme of flowing lines, perforated textures and prints.





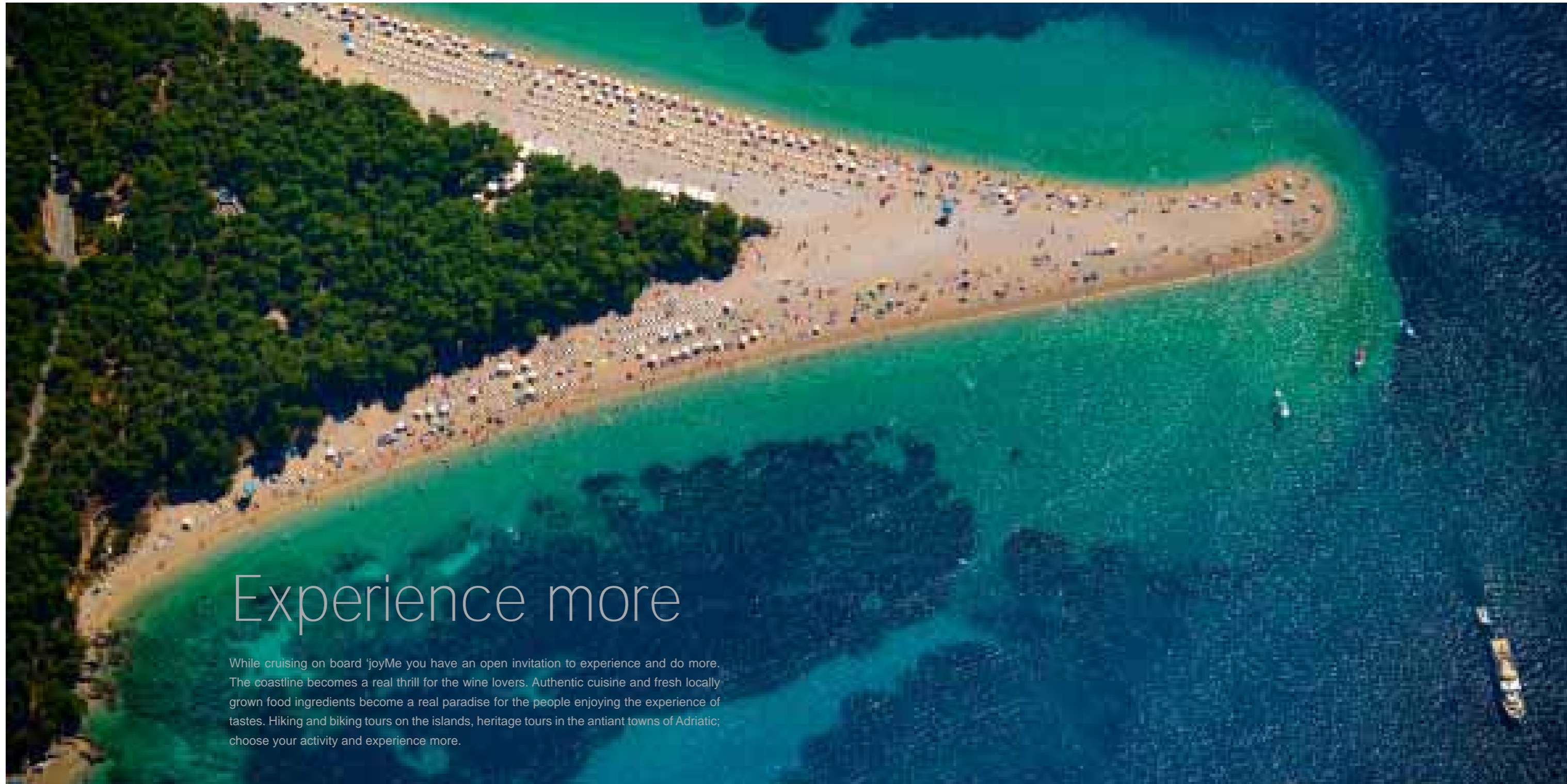
Adriatic & West Med at your service...

Being the most popular new cruising destination of the world, Adriatic hides Ancient and Medieval towns, stunning nature and crystal clear waters. Cruise from Venice, Brioni and Kornati archipelagos through Krka waterfalls, cities of Split and Šibenik, enjoy the heat on sunny Hvar and experience the magic of Dubrovnik and Montenegro. Or start in St.Tropez, visit Porto Cervo, Capri and Sicily... We stay on your service.



Why we are special?





Experience more

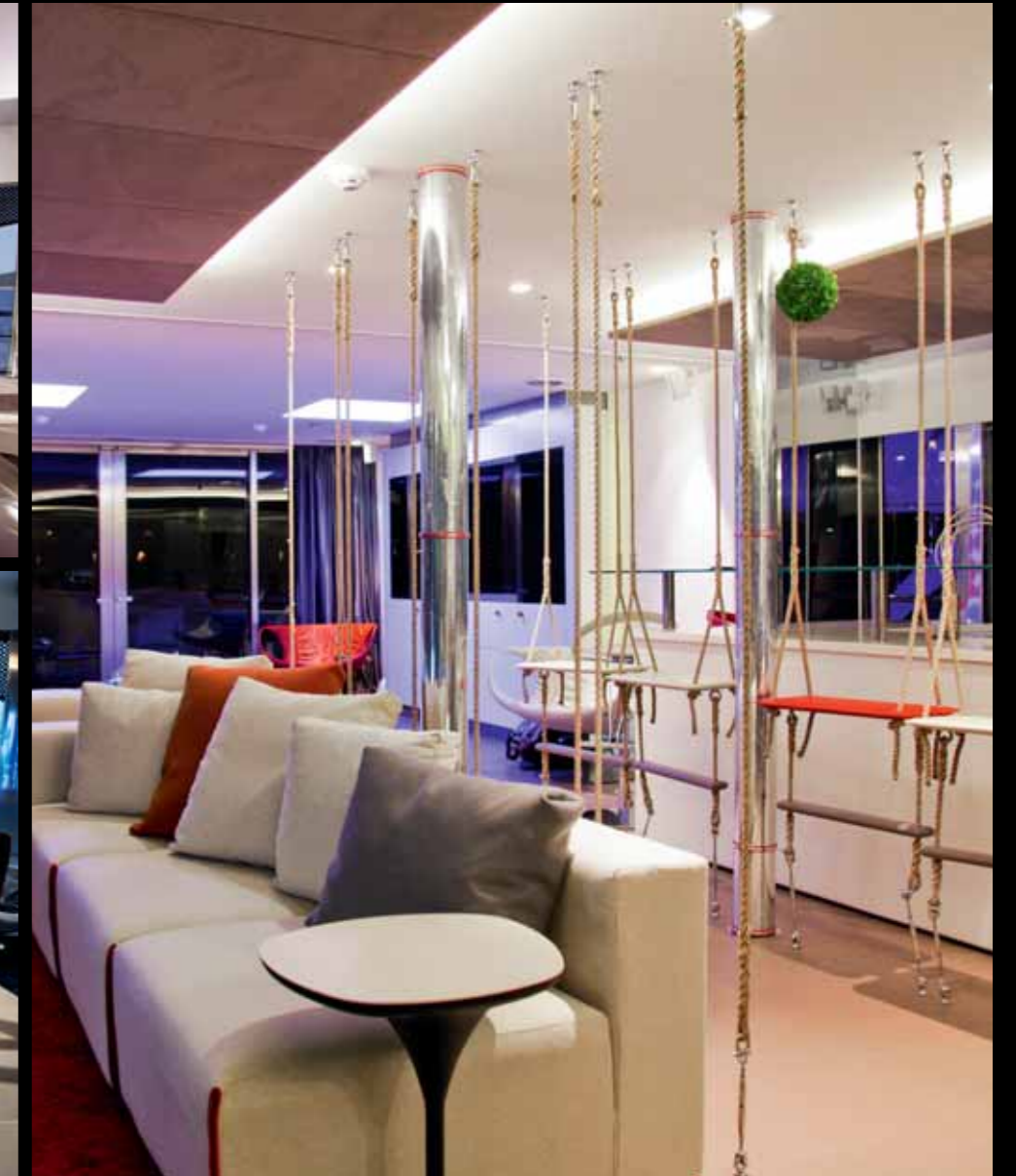
While cruising on board 'joyMe you have an open invitation to experience and do more. The coastline becomes a real thrill for the wine lovers. Authentic cuisine and fresh locally grown food ingredients become a real paradise for the people enjoying the experience of tastes. Hiking and biking tours on the islands, heritage tours in the antiant towns of Adriatic; choose your activity and experience more.



Main deck

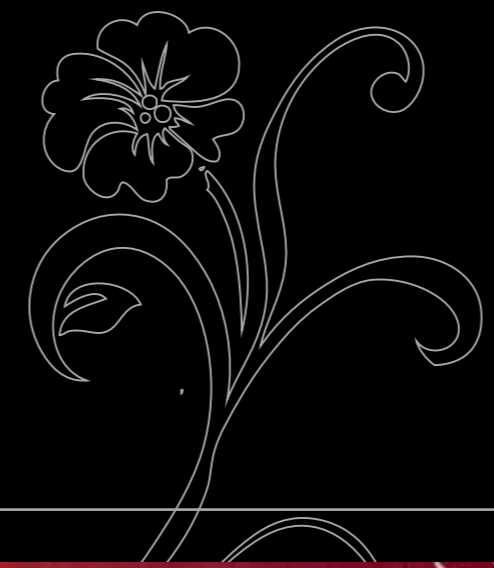
Live Longer

The interiors of 'joyMe make her a floating piece of contemporary art. Her interiors start shining on the main deck designed as the lounge area whose extension is the cockpit and stern deck, while large dining area allocated in the front part, with stylish table designed by the owner's wishes, enjoys stunning views and design details such as ceiling lights and special chair design. Yet, the most popular chairs are the hanging ones...



Why we are unique?

The guest accommodation is located at the main deck! Every cabin is different, offering special design style, by the highest standards of this unique yacht.
The Print themed cabin is just another example of compatibility and the successful application of the modern design to the yacht. The Chic themed cabin just loves red velvet.



Live Longer





Live Longer



MONDRIAN & NATURE cabin

The 'cube' inspired by Piet Mondrian's art on board 'joyMe' introduces the way to enjoy his work within the ultimate comfort of this magnificent yacht. Although she can be considered as the 'design SPA' joyMe also offers a different approach to rejuvenation - the one you will not miss in the cabin inspired by Nature - just plain, simple colors and forms create inner peace and tranquility.





Owner's Suite



Live Longer

The owners apartment is situated on the upper deck, the sleeping area consists of two cabins and large walk-in bathroom. Vintage designed hot tub is placed in the centre of the bathroom so you can enjoy the sea view. Private salon enjoys even more stunning view of 270° and is joined by carefully arranged deck area. The space is highly marked by printed walls.

Live stronger

The large Gym area has been allocated at the stern part of lower deck. This delightful area by the sea enjoys beautiful views of open stern and the sea. Once close to the sea you will enjoy the theme of this area - fish species inspired design. And then you can relax in Finnish sauna and Hammam.



Live Longer



Oceans are our home



Live Longer

The fun starts when she hits the waves, uncompromised construction and hydrodynamically optimized hull leave nothing less than pure joy of exploring the seas on board 'joyMe.



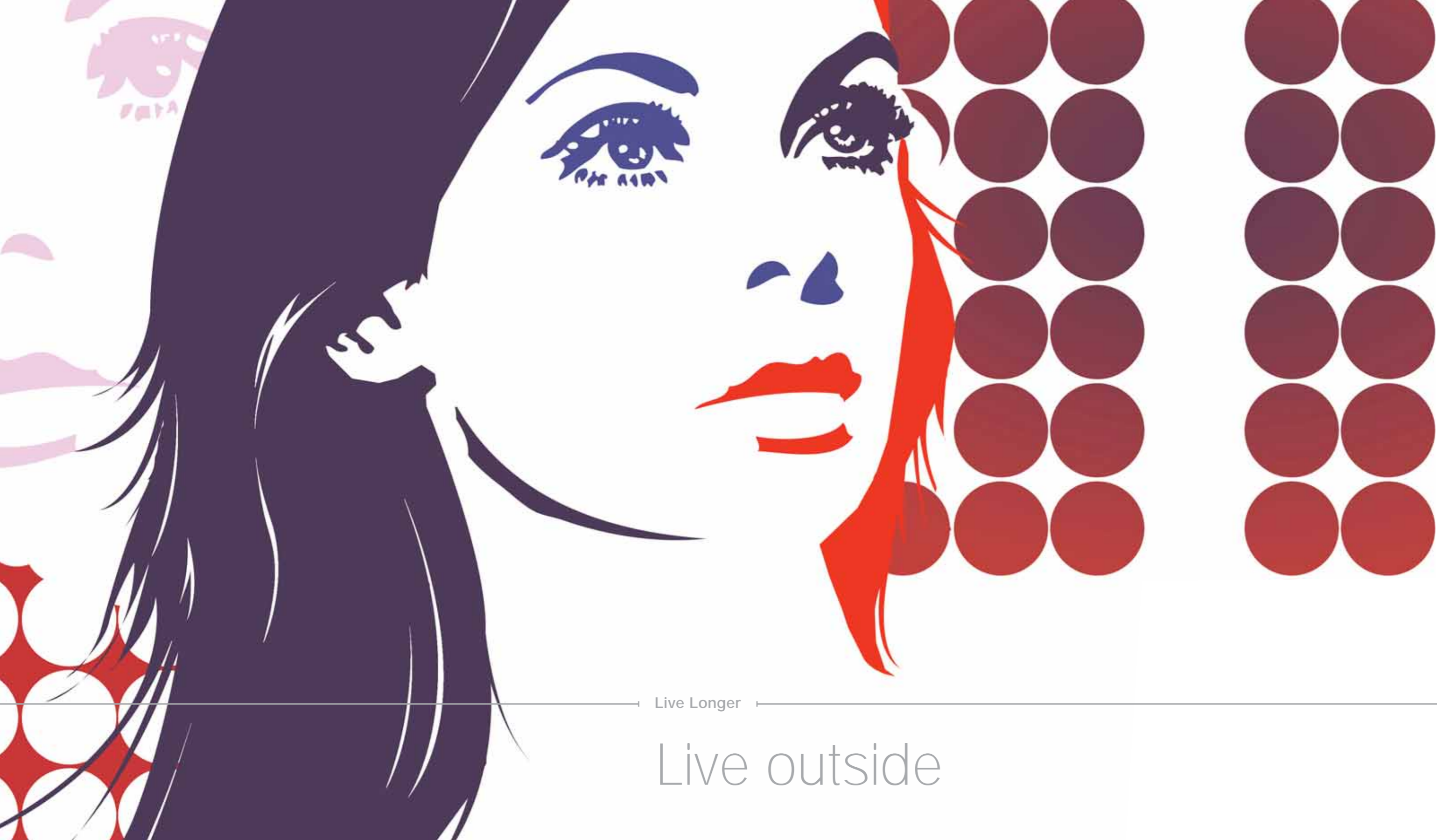
Live Longer



Party friendly

The exterior areas are easily accessible and connected by large corridors. The real 'party part' of the yacht has been created at the sundeck, together with 3.5 meter pool and characteristic decoration, it becomes especially attractive in the evening. Ideal choice for private dining, colorful parties or corporate events.





Live Longer

Live outside



Many charming places on the open air invite you - from stern cockpit to the small sun pad in the bow tip, from the pool area to Portuguese bridge seating lounge. The joyful colors and comfortable, ergonomic seating give a hard choice on where you will want to enjoy more.

Smart cooking

The kitchen on 'joyMe is professionally equipped to serve the highest standard of healthy food preparation. All the dishes are branded Zepter Masterpiece collection. Perfect service and chef's mastery are joined in the dining area that also enjoys stunning view, being a part of carefully selected design puzzle; shiny stainless steel surfaces reflect plenty of natural light - - the same effect you will find at glasses and ceiling light.



Live Longer





Live Longer

Our crew - at your service

'JoyMe is the biggest but also the best luxury yacht of the Adriatic. Our carefully selected Croatian crew is the guarantee of the on board service quality. Eleven professionals have been chosen for their 'can do' attitude, their genuine enthusiasm and a high sense of responsibility and safety awareness for assuring that guests have a memorable experience on board.



Highest standards

The 'joyMe is fully customized as per owner's wishes and offers a variety of uniqueness. Being built by highest industry standards, exceptional combination of design and creativity make her excel - that is exactly what the Philip Zepter Yachts is able to create as reflection to personal wishes of the client. 'joyMe is the yacht built to go beyond the limits bringing the ultimate satisfaction to the clients worldwide.



Live Longer

Construction	A grade steel hull, aluminium sun deck
LOA	49,907 m
LWL	44,420 m
Beam	9,118 m
Draft (max)	2,55 m
Displacement	621,5 t
Air condition	throughout whole yacht, in all cabins
Fuel capacity	60.000 l
Water capacity	2 x 24.000 l
Maximum speed	15 knots
Cruising speed	13 knots
Range	3.000 nm at speed of 12 knots
Main engines	2 x Cummins Type: KTA-38-M1, 12-cylinder
Rating	2 x 1100 bhp @ 1800 rpm
Propulsion	2 x fixed pitch propellers, 5 blades
Main generators	3 x Cummins Type: 6CTA8.3-D(M)
Rating	each 136 kW, 50 Hz, 400 VAC, 3 phase, 24 VDC starting
Engine	6-cylinder, 1500 rpm, heat exchanger-cooled
Emergency generator	1 x Cummins Type: 6BT5.9-D(M)
Rating	91 kW, 50 Hz, 400 VAC, 3 phase, 24 VDC
Engine	6-cylinder, 1500 rpm, heat exchanger-cooled
Electricity	230/400 Volt, 50 Hz 3 phase-system

Other machinery	MARIOFF Hi-Fog fire protection system, Bilge Oily Water Separator, HAMANN water makers total capacity 9 m3/24 h, 1 x DTG bow thruster rated power 70 kW, MATH'S hydraulic gyro-controlled zero-speed stabilizers, JETS Norway toilet system, HAMANN sewage treatment, ALFA LAVAL fuel separator
Accommodation for 12 guests in	6 in-suite air-conditioned cabins Cabins on the VIP deck: 1 x Master double king size bed cabin and 1 x VIP twin bed cabin Cabins on the Main deck: 2 double bed cabins & 2 twin bed cabin (1 pullman bed)
Crew	11
Classification	Croatian Register of Shipping, Hull*100A1 1, (Unrestricted service) Yacht Machinery*M1 Aut1 MCA-LY2 commercial code compliant Bureau Veritas 1• Hull • Mach, Charter Yacht Motor-s Unrestricted Navigation, Aut-Ums
Year	2011
Yacht design	Srdjan Djakovic
Naval architecture & Builder	Philip Zepter Yachts
Interior design & Exterior Styling	Standby, Marijana Radovic

M/Y 'joyMe - 50 m (164')

LOCATION

- Marina Frapa, Adriatic Sea (30 km from Split international airport and 90 km from Zadar airport)

ACCOMMODATION

- 12 clients in 6 in-suite air-conditioned cabins (3 double bed, 3 twin bed)

LOWER DECK

- The Gym, Finish sauna & Hammam SPA with sea view

MAIN DECK

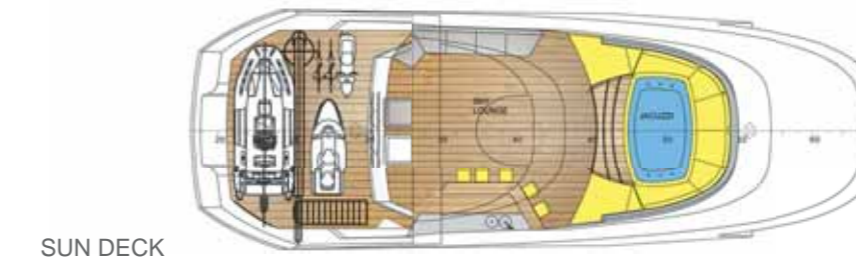
- 4 Guest sea view cabins (2 double bed cabins & 2 twin bed cabins +1 pullman bed)
- Dining space, the pantry, main saloon, day head, cockpit lounge
- Guest cabins each enjoy large bathrooms that remind on luxury homes, detailed to maximum attention to the styling.
- Chic, Print, Nature & Mondrian cabin

VIP DECK

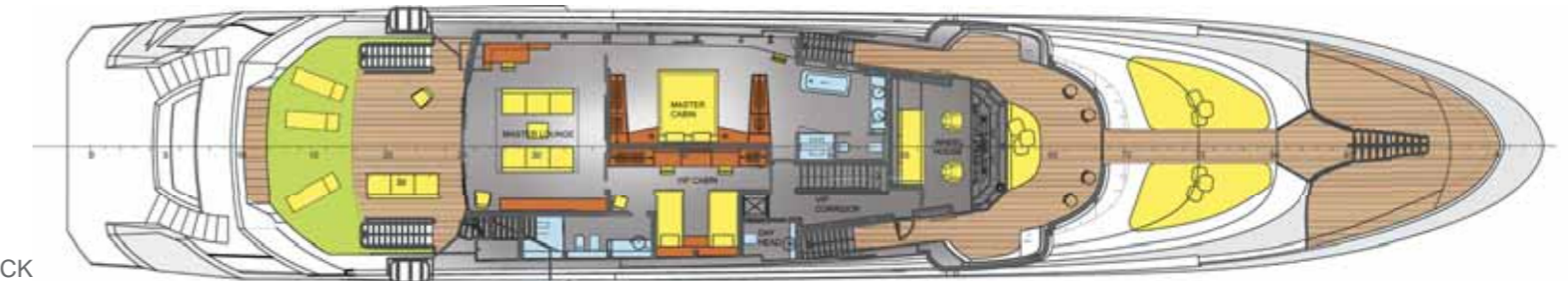
- The owners' apartment (1 x Master double king size bed cabin and 1 x VIP twin bed cabin)
- walk-in bathroom
- Master lounge
- Wheelhouse
- Portuguese bridge with seating
- Sunbeds on the bow

SUN DECK

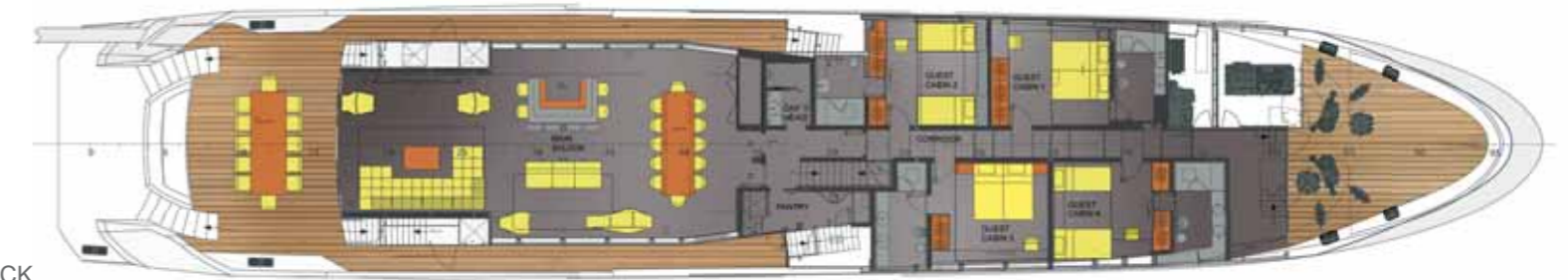
- 3.5 meter Jacuzzi and sky lounge especially attractive in the evening



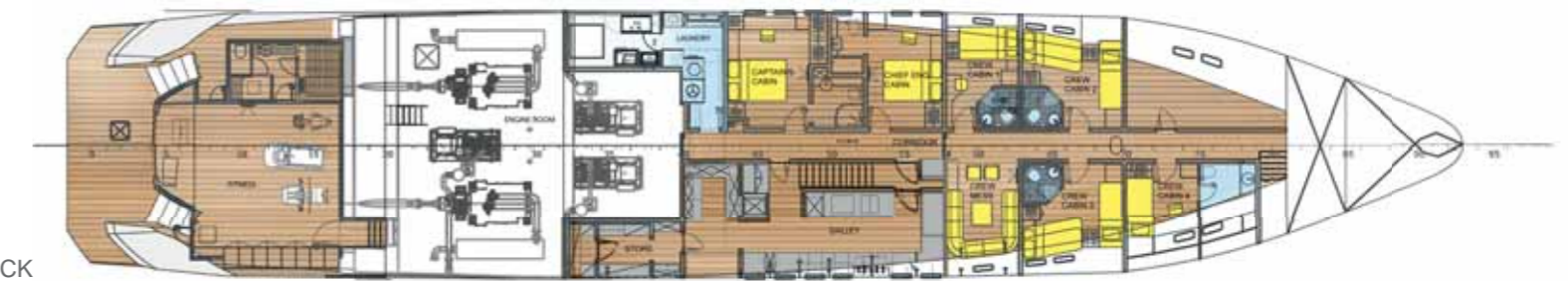
SUN DECK



VIP DECK



MAIN DECK



LOWER DECK

Live Longer

Equipment

Wi-Fi available on the whole yacht

CABIN EQUIPMENT

Safe in all cabins - Technosafe

Plasma TV in all cabins / Interphone in all cabins

Room service

A/C, MVAC controls in all cabins

TV & HI-FI: TV Sony Bravia, Blu-Ray Disc-DVD Player, Reciver Sony, 2.1 BOSE system, Sat TV: Hot Bird, W2M, Astra.

MAIN SALOON

TV & HI-FI: TV Sony Bravia 3D, TV Sony Bravia, 2X Reciver Sony, 2X Blu-Ray Disc-DVD Player Wi-Fi, 2 x BOSE 5.1 system, Sat TV: Hot Bird, W2M, Astra, iPad/iPod connection.

VIP SALOON

TV & HI-FI: TV Sony Bravia 3D, Reciver Sony, Blu-Ray Disc-DVD Player Wi-Fi, Sat TV: Hot Bird, W2M, Astra.

THE GYM

EOS Finish Sauna & Hammam SPA / Vision Fitness Bike E3200 – GYM bike / Vision Fitness Bike R2250 – GYM bike

Vision Fitness Torus 408 – Multi GYM sprava / Kettler Rivo P - Orbitrek / Set of weights 2 - 18 kg / Biopton Pro1-color therapy

Plasma TV / Interphone / Safe - Technosafe

A/C, MVAC controls

TV & HI-FI: TV Sony Bravia, Blu-Ray Disc-DVD Player, Reciver Sony, 5.1 BOSE system, Sat TV: Hot Bird, W2M, Astra.

THE TOYS

6 m tender

Electrical bike / GoCycle G2 x1

Wave runner for 2 person

Slip board

Water ski equipment

Scuba diving equipment on board (*for rendezvous diving) / Mares x 4

TOYS AVAILABLE UPON REQUEST

Jet Ski / Sea doo / Sea bob / Inflatable - Slides, Tubes and Trampolines

Paddleboard / Bicycle, Scooter & Segway / Extreme- Jetlev & Flyboard

* 9 m shadow tender RIS Marine RM 850 cabin exclusive outboard 2 x Mercury 250 and a skipper





Live free

Live Longer

We invite you to step into the freedom of sailing on board of luxury yacht. Capture the piece of paradise and let us show you the new meaning of precious moments and perfect vacation.



